

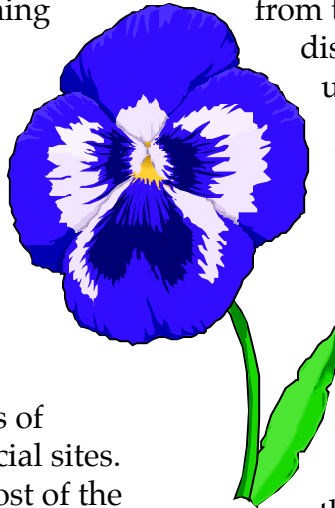
Ohio State 2002-2003 Fall Pansy - Viola Trial Results

Monica Kmetz-González and Claudio C. Pasian

Trial Site Location

This trial marked the third year for our Fall Pansy and Viola Trials, and the first year it was conducted in-ground. This new site is located in the Learning Gardens area just north and west of our departmental buildings on The Ohio State University's Columbus campus. Our previous trials had been conducted in raised beds.

We believe our new in-ground site more directly mimics the "real world" growing areas of homeowner, city, and commercial sites. The trial site receives shade most of the morning, followed by approximately six to eight hours of full sun. The area, formerly in grass, was amended with Kurtz Brothers Professional Blend. Pre-plant fertilization with 300 ppm N 20-10-20 was performed by means of liquid feed on August 27 and September 9, 2002.



Plant Material

A total of 83 cultivars were evaluated. Of these, 63 were Pansy (including six Panola) and 20 were Viola. Seed from the participating breeders and distributors was grown again for us by Bob Barnitz of Bob's Market and Greenhouse, Mason, West Virginia.

Procedure

Plants in 2-1/4" cell paks were received in our greenhouses on Sept. 11, 2002. On Sept. 12, a Rootshield drench was applied to the plants. Transplanting to the in-ground site occurred on Sept. 17. Nine plants per cultivar were outplanted. Spacing was on 1-foot centers. No mulch was used. Post-planting fertilization with 200 ppm N 20-10-20 with a Dosatron occurred on Sept. 25, Oct. 9, and Oct. 21. There were no pest or disease problems.

Weather Conditions

The cold temperatures during the course of this trial provided a good test of overwintering. Minimum and maximum temperatures from mid-

Monica Kmetz-González, Annuals Trials Manager, The Ohio State University, Columbus, Ohio; Claudio C. Pasian, Associate Professor and Extension Specialist, Ohio State University Extension.

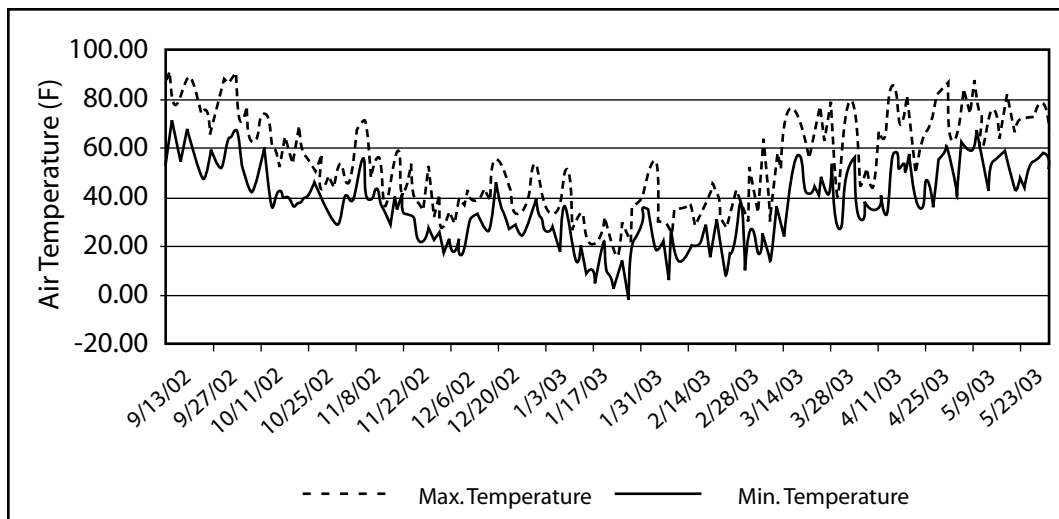


Figure 1. Minimum and maximum temperatures during trial period September 2002 - May 2003.

September through mid-May can be found in Figure 1. These temperatures were recorded by a departmental weather station located in close proximity to the trial plot.

Plants got off to a good growing start with favorable climatic conditions in September and October. The first night of freezing temperatures occurred on Nov. 1. The plants overall looked good until the first very hard freezes occurred at the end of November.

The winter was punctuated by cold temperatures and some snowfall throughout. The season low of -2°F occurred on Feb. 1. A major snowstorm on Feb. 16 covered the area with 18 inches of snow, and snow cover remained on the trial plants for the next three weeks before any melting occurred.

This snow cover was somewhat helpful in insulating the plants from the continuing cold temperatures over the next month. The first warming trend took place in mid-March, and favorable spring weather conditions followed.

Evaluations and Results

Ratings were based on a scale of 1 to 5, with 1 = poor and 5 = excellent. Plants were evaluated for the following characteristics:

Flower Quality

Aesthetics, color, health, and appearance

Flower Number

1 = Low, 5 = Very floriferous

Foliage

Vegetative vigor, aesthetics/color, health, and appearance

Uniformity

1 = Quality is variable from plant to plant.
5 = Quality is similar between all plants (for Spring evaluation only).

Overall

Overall rating for all plants in the grouping, taking all aspects into consideration.

Quantitative evaluation results can be found in the accompanying tables.

The Fall Evaluation (Pansies, Table 1, and Violas, Table 2) was performed six weeks after transplant by the Annual Trials Coordinator. Overwintering evaluations were done on March 17, March 24, and April 14.

A final winter survival count was performed on April 23, with the total overwintering survival count for the trial being 94.4%. Specific cultivar survival percentages can be accessed in additional tables on the Web at:

<http://floriculture.osu.edu/archive/aug03/PansyViola03Trial.html>

The final Spring Evaluation (Pansies, Table 3, and Violas, Table 4) was done by our core team of evaluators on May 1. Plants were pulled on May 12 to make way for our Summer Annuals Trial.

The top performers in the final Spring Evaluation are listed here. These are the best selections after overwintering. Of note, many other cultivars performed well in the trial.

Pansies: Top 12

Ultima Baron Merlot (perfect score in every category)
Panola Purple w/Face
Panola Blue w/Blotch Improved
Ultima Baron Purple (Perfection)
Skyline Blue w/Face
Panola White w/Blotch
Panola Beaconsfield
Ultima Impressions Blue Shades
Fama Silver Blue
Ultima Beacon Blue
Panola Golden Yellow
Clear Sky Purple.

Violas: Top 5

Penny Yellow Jump-Up and Penny Violet Flare (both with perfect scores in every category)
Sorbet Yellow Frost
Sorbet Sunny Royale
Sorbet Coconut Swirl.

All results, along with individual cultivar photos and overview photos of the trial site, can be accessed on the Web at:

<http://floriculture.osu.edu/archive/aug03/PansyViola03Trial.html>

Acknowledgments

We would like to acknowledge the help of our Annuals Team of Master Gardeners who helped in all phases of this trial.

We thank Bob Barnitz of Bob's Market and Greenhouse, Mason, West Virginia, for seeding and growing the transplants.

And we thank the following companies for their participation in this year's trial:

Benary
Goldsmith Seeds
PanAmerican Seeds
Sakata, Syngenta, and Takii.

Table 1. Ohio State Fall Pansy and Viola Trial, 2002-03. Fall Rating 10/22/02.

Pansies		Seed Company	Rating Scale: 1: Poor - 5: Excellent			
			Flower Appearance	Flower Number	Vegetative Growth/Foliage	Overall*
Series	Cultivar					
Delta	PRM Deep Blue w/Blotch	Syngenta	4.75	4	3	4.25
Panola	Blue w/Blotch Improved	PanAmerican	4.75	4	3.75	4
Panola	Purple w/Face	PanAmerican	4.5	3.75	3.5	4
Ultima Beacon	Blue	Sakata	4.5	3.5	3	4
Fama	Spanish Eyes	Benary	4.25	3	4	4
Ultima Baron	Merlot	Sakata	3.75	3.75	4	3.75
Panola	Beaconsfield	PanAmerican	5	2.5	3.5	3.5
Ultima Impressions	Rose Shades	Sakata	3.75	3	3.25	3.5
Panola	Yellow w/Blotch	PanAmerican	3.25	3.75	3.25	3.5
Iona	Ocean	Takii	4	2.5	2.75	3.25
Clear Sky	Sky Purple	Syngenta	4	2.25	4	3.25
Ultima Impressions	Blue Shades	Sakata	3.75	3.25	3	3.25
Karma	Yellow	Goldsmith	3	2.5	3.75	3.25
Fama	Dark-Eyed Blue Improved	Benary	4.25	3	2.5	3
Karma	White Blotch	Goldsmith	3.75	3	2.75	3
Ultima Baron	Purple (Perfection)	Sakata	3.75	2.75	3.75	3
Panola	Golden Yellow	PanAmerican	3	3	4	3
Delta	PRM Yellow w/Blotch	Syngenta	3	3	3	3
Karma	Rose Blotch	Goldsmith	3	2.75	2.75	3
Iona	Purple & White w/Blotch	Takii	4.75	2.75	2.5	2.75
Karma	Blue Blotch	Goldsmith	4	2.5	2	2.75
Panola	White w/ Blotch	PanAmerican	3.75	2.75	2.75	2.75
Delta	Violet w/ Face	Syngenta	3.75	2	3.25	2.75
Delta	White w/ Blotch Improved	Syngenta	3.5	3	2.5	2.75
Fama	Carmin Rose w/Blotch	Benary	3.5	3	2.5	2.75
Iona	Purple & Yellow w/Blotch	Takii	3.25	2.5	2.5	2.75
Fama	Dark-Eyed Lemon	Benary	3.25	2	2.5	2.75
Iona	White w/Blotch	Takii	3	3	2.75	2.75
Iona	Yellow	Takii	3	3	1.5	2.75
Ultima Beacon	Rose	Sakata	4	2.5	2.25	2.5
Iona	Purple w/Blotch	Takii	4	2	2.25	2.5
Fama	Purple	Benary	4	1.5	2.75	2.5
Iona	Frosty Lemon	Takii	3.25	2.75	2.5	2.5
Fama	True Blue	Benary	3.25	1.75	2.75	2.5
Fama	White Exp.	Benary	3	3	2.5	2.5
Fama	Peach Shades Exp.	Benary	3	2.75	2	2.5
Karma	Red Blotch	Goldsmith	3	2.5	2.75	2.5

Table 1 (continued). Ohio State Fall Pansy and Viola Trial, 2002-03. Fall Rating 10/22/02.

Pansies		Seed Company	Rating Scale: 1: Poor - 5: Excellent			
			Flower Appearance	Flower Number	Vegetative Growth/Foliage	Overall*
Series	Cultivar					
Skyline	Copperfield	Syngenta	3	2.5	2.5	2.5
Ultima Baron	Red Blotch (Red Perfection)	Sakata	3	2.5	2.5	2.5
Ultima Beacon	Yellow	Sakata	3	2	3	2.5
Delta	PRM PU White (Pure White)	Syngenta	2.75	2.5	2.5	2.5
Clear Sky	Deep Orange	Syngenta	2.75	2.25	2.5	2.5
Iona	Rose w/Blotch	Takii	4.5	2.25	1.75	2.25
Ultima Baron	Mahogany	Sakata	3	2	2.75	2.25
Colossus	White w/Blotch	Syngenta	3	2	2.25	2.25
Iona	Gold w/Blotch (Golden w/Blotch)	Takii	2.75	2.25	2.25	2.25
Colossus	Deep Blue w/Blotch	Syngenta	4	1.5	2.25	2
Colossus	Rose w/Blotch	Syngenta	3.5	2	1	2
Ultima Morpho		Sakata	3.5	1.5	2.75	2
Colossus	Red w/Blotch Improved	Syngenta	2.75	2	2.75	2
Karma	Yellow Blotch	Goldsmith	2.75	2	1.5	2
Delta	PRM PU Yellow (Pure Yellow)	Syngenta	2.75	1.5	2.5	2
Fama	Silver Blue Exp.	Benary	2.75	1.5	2	2
Colossus	Yellow w/Blotch	Syngenta	2.5	2	2	2
Karma	Rose	Goldsmith	3	2.75	2	1.75
Fama	Lemon Blotch Exp.	Benary	3	1.75	2	1.75
Fama	Dark-Eyed Yellow	Benary	2.25	1	1.75	1.75
Fama	Primrose	Benary	3	1.75	2	1.5
Ultima Impressions	Yellow Shades	Sakata	3	1.25	2	1.5
Skyline	Blue w/Face	Syngenta	3	1	3	1.5
Fama	Silver Blue	Benary	3	0.5	3	1.5
Fama	Red	Benary	2.75	1	2.5	1.25
Fama	Pure White	Benary	2.5	2.25	1.5	1

* Table ranked in descending order based on the Overall rating.

Table 2. Ohio State Fall Pansy and Viola Trial, 2002-03. Fall Rating 10/22/02.

Violas		Seed Company	Rating Scale: 1: Poor - 5: Excellent			
			Flower Appearance	Flower Number	Vegetative Growth/Foliage	Overall*
Series	Cultivar					
Penny	Yellow Jump-Up	Goldsmith	4.75	3.5	4.5	4
Sorbet	Orange Duet	PanAmerican	4	3.25	4	3.75
Starlet	Pink Shades	Takii	3.75	4	3.75	3.75
Penny	Violet Flare	Goldsmith	4.5	3	3.25	3.5
Sorbet	Coconut Swirl	PanAmerican	4.25	4	3.5	3.5
Starlet	Light Rose w/Blotch	Takii	4.5	4.25	4	3.25
Penny	Deep Blue	Goldsmith	4.5	3.5	3.25	3
BabyFace	Ruby Gold	PanAmerican	4	3.25	3	3
Sorbet	Yellow Frost	PanAmerican	4	2.25	4.25	3
Starlet	Red w/Blotch	Takii	3.75	2.25	3.5	3
BabyFace	Marina	PanAmerican	4	3.25	2	2.75
Sorbet	Sunny Royale	PanAmerican	4	2	3.75	2.75
Starlet	Yellow	Takii	3.75	3.25	2.75	2.75
Sorbet	Blueberry Cream	PanAmerican	3.75	2.5	2.75	2.75
Sorbet	Yellow Delight	PanAmerican	3.5	3	3.75	2.75
Penny	Orange	Goldsmith	3	3	3	2.75
Starlet	Orange	Takii	3	2.75	3.25	2.75
Penny	Orange Jump-Up	Goldsmith	3.5	3	2	2
Penny	Yellow	Goldsmith	3.5	2.75	2	1.75
Penny	White	Goldsmith	2.5	3	2	1.5

* Table ranked in descending order based on the Overall rating.