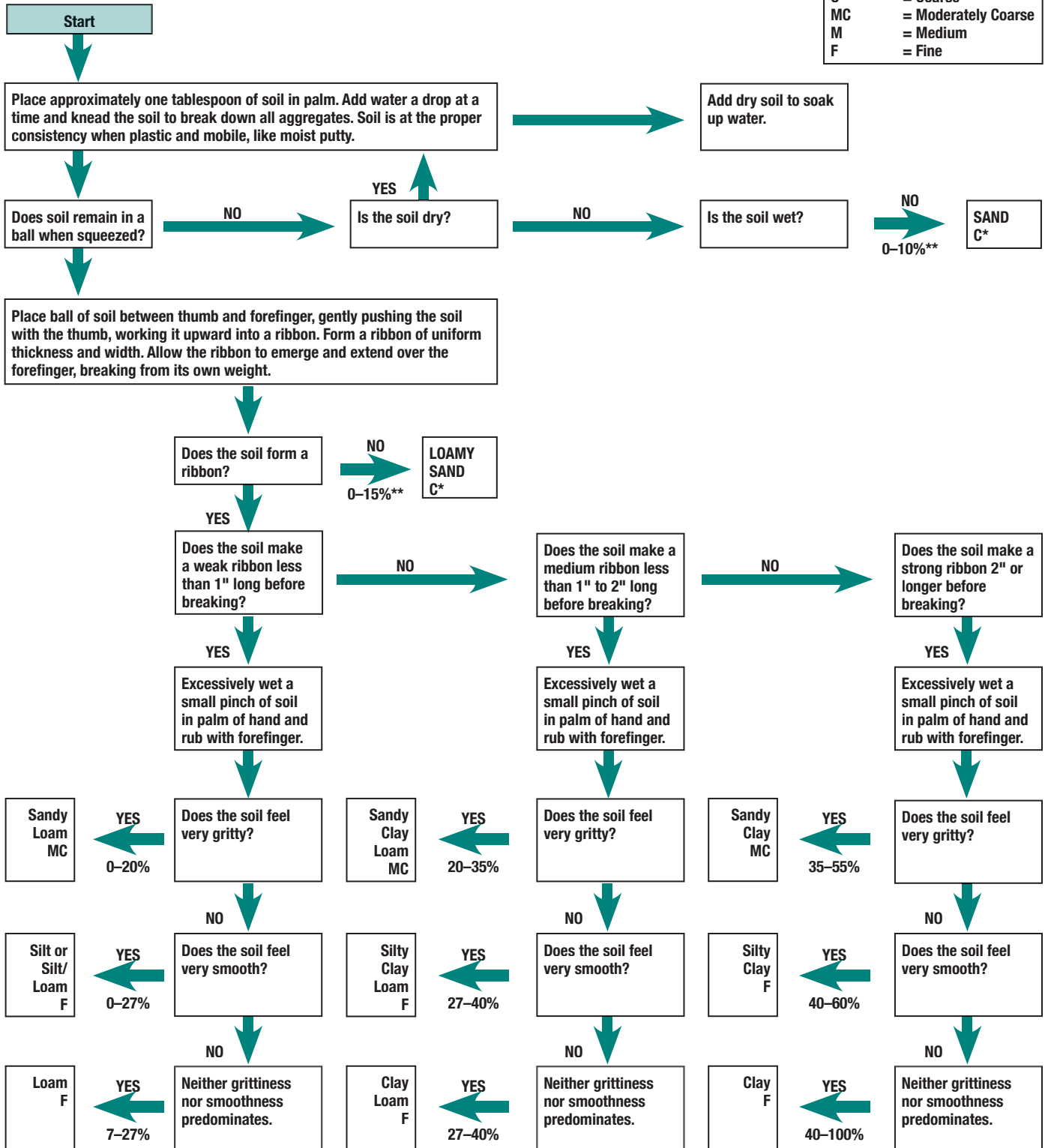


Determining Soil Texture by the "Feel Method"

Texture Classification	
C	= Coarse
MC	= Moderately Coarse
M	= Medium
F	= Fine



* Sand Particle size should be estimated (very fine, fine, medium, coarse) for these textures. Individual grains of very fine sand are not visible without magnification and there is a gritty feeling to a very small sample ground between the teeth. Some fine sand particles may be just visible. Medium sand particles are easily visible. Examples of sand size descriptions where one size is predominant are; very fine sand, fine sandy loam, loamy coarse sand.

** Clay percentage range.

Modified from: Thien, Steven J., Kansas State University, 1979 Jour. Agronomy education.

Figure 4. Flowchart illustrating the process to determine soil texture.