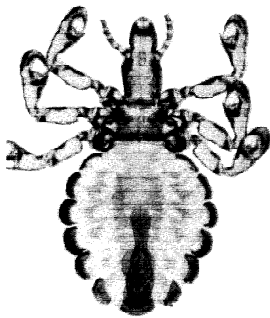
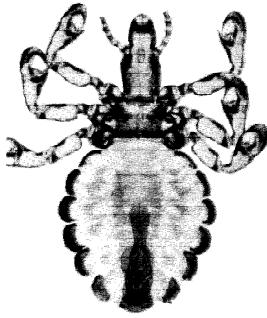
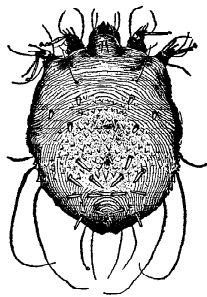


SWINE

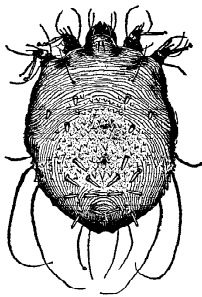
Pests	Material and Formulation	Minimum Days from Last Application to Slaughter	Amount per Animal or Area if Appropriate	Remarks	
Lice			Spray		
	amitraz (Taktic) 12.5% EC	3	1 to 2 qts. per animal	Mix 1 can (760 ml) 12.5% EC in 50 gals. of water. Spray animals until the mixture runs off, especially to jowl, legs, inside ears and body underside. Baby pigs of any age may be sprayed or dipped. At the same time, spray walls, floor and any fittings in the pen. Apply spray within 6 hours after mixing. Repeat application in 10 to 14 days.	
	coumaphos (Co-Ral) 5.8% EC 11.6% EC (Restricted Use) 25% WP	0	Wet to point of runoff	Mix 4 qts. 5.8% EC or 2 qts. 11.6% EC or 2 lbs. 25% WP per 100 gals. of water. Spray animals thoroughly. Repeat application 10 days to 2 weeks later. Do not treat animals less than 3 months old. Spray animals 3 to 6 months old lightly.	
	fenvalerate (Ectrin) 10% WDL	1	1 pt. per animal	Mix 1 pt. 10% WDL in 25 gals. of water. Apply particularly to neck and ears. Repeat treatment in 14 days if needed.	
	Lindane (Restricted Use) 12.4% EC 20% EC	30	Wet to point of runoff	Mix 3 pts. 12.4% EC or 1 qt. 20% EC in 100 gals. of water. Treat twice at 7-day intervals. Do not treat pigs less than 3 months old. Do not treat sows within 2 weeks before farrowing or 3 weeks after farrowing.	
	methoxychlor (Marlate) 50% WP	0	Thoroughly wet animal	Mix 2 lbs. 50% WP in 25 gals. of water. Repeat treatment every 3 weeks as needed.	
	permethrin (Ectiban, Insectrin) 5.7% EC	5	Thoroughly wet animal	Use 1 qt. 5.7% EC in 25 gals. of water. Repeat application in 14 days. Do not treat more often than once every 14 days.	
	(Permethrin II, Insectrin X) 10% EC	5	1 qt. for large animals; 1 pt. for small animals	Mix 1 qt. 10% EC in 100 gals. of water. Treat affected areas or entire body and bedding. Retreat after 4 to 6 weeks. Do not treat more often than once every 14 days.	
	(Atroban, Expar) 11% EC	5	1 pt. per animal	Use 1 pt. 11% EC in 25 gals. of water. One application should eliminate an infestation. Do not treat more often than once every 14 days.	
	(GardStar) 40% EC	0	1 to 2 qts. per animal	Mix 4 fl. oz. 40% EC in 25 gals. of water. Treats 100 head.	
	prolinate (DelPhos, Phosmet) 11.6% EC	1	Thoroughly wet animal	Mix 2 qts. 11.6% EC in 50 gals. of water. Do not treat pigs less than 3 months old. Repeat treatment in 14 days if needed.	
	tetrachlorvinphos (Rabon) 50% WP	0	1 to 2 qts. per animal	Mix 2 lbs. 50% WP in 25 gals. of water. Wet animals thoroughly. Repeat in 2 weeks if needed.	
				Pour-on	
	amitraz (Point-Guard) 2%	7	2.5 to 5 ml per ear; 5 to 60 ml midline of back	Ready to use. Exact dosage depends on animal weight. Review label chart for appropriate application rate and calibrate applicator gun connected to the product container, allowing precise calibrated dosage (for nursing pigs, lactating and pregnant sows and boars). Treat all incoming replacement animals. Treat twice 7 to 10 days apart.	
fenthion (Tiguvon) 3%	14	1/2 fl. oz. per 100 lbs. of body weight	Ready to use. Treat all swine in herd including gestating and lactating sows. Treated lactating sows will reduce lice on nursing pigs. Apply with dipper along backline. Do not make second treatment sooner than 35 days after first treatment.		



Swine (continued)

Pests	Material and Formulation	Minimum Days from Last Application to Slaughter	Amount per Animal or Area if Appropriate	Remarks	
Lice (continued) 	fenvalerate (Ectrin) 10% WDL	1	4 fl. oz. per animal	Mix 1 qt. 10% WDL in 25 gals. of water. Add wetting agent according to label directions. Pour dilution on head and down back midline. Repeat treatment in 14 days if needed.	
	Dust				
	coumaphos (Co-Ral, Zipcide) 1% D	0	1 oz. per animal	Ready to use. Wear rubber gloves and hand dust especially to shoulders and back. Repeat as needed, but not more than once every 10 days.	
	methoxychlor (Marlate) 50% WP	0	Apply thoroughly	Ready to use. Rub in to carry powder beneath the hair. Repeat treatment every 3 weeks as needed.	
	permethrin (Ectiban, Insectrin, Permethrin) 0.25% D	5	1 oz. per animal	Ready to use. Do not repeat treatment more than once every 14 days.	
	tetrachlorvinphos (Rabon) 3% D	0	3 to 4 oz. per animal	Ready to use. Apply 1 lb. 3% D per 150 sq. ft. of bedding for severe infestations. Do not repeat for 14 days.	
	Injection				
	ivermectin (Ivomec) 0.27%	18	1 ml per 20 lbs. body weight	Ready to use. For grower and feeder pigs. Inject subcutaneously and use aseptic procedures. Follow label directions. Consult label for treatment schedule.	
	(Ivomec) 1%	18	1 ml per 75 lbs. body weight	Ready to use. Inject subcutaneously and use aseptic procedures. Follow label directions. Consult label for treatment schedule.	
	Feed Additive				
ivermectin (Ivomec Premix)	5	100 mcg/kg body weight. Add to starter, grower and finisher feeds at 300 g per ton to supply 1.8 g ivermectin per ton (2ppm) of feed.	For growing pigs up to 220 lbs. body weight. Feed the recommended dose level dairy for 7 days. For the treatment and control of gastrointestinal roundworms, kidney worms, lungworms, lice and mange mites in growing pigs. Ivomec Injection for Swine (1% ivermectin) is the recommended formulation for adult swine.		
Mange (Mites) 	Spray				
	amitraz (Taktic) 12.5% EC	3	1 to 2 qts. per animal	Mix 1 can (760 ml) 12.5% EC in 50 gals. of water. Spray animals until the mixture runs off, especially to jowl, legs, inside ears and body underside. Baby pigs of any age may be sprayed or dipped. At the same time, spray walls, floor and any fittings in the pen. Apply spray within 6 hours after mixing. Repeat application in 7 to 10 days.	
	lindane (Restricted Use) 12.4% EC 20% EC	30	Thoroughly wet animal	Mix 3 pts. 12.4% EC or 1 qt. 20% EC in 100 gals. of water. Apply 2 sprays thoroughly 1 week apart. Do not treat animals under 3 months of age or sows within 2 weeks of farrowing.	
	fenvalerate (Ectrin) 10% WDL	1	1 pt. per animal	Mix 1 pt. 10% WDL in 25 gals. of water. Apply treatment thoroughly to entire animal. Repeat application in 14 days if needed.	
	permethrin (Ectiban, Insectrin) 5.7% EC	5	Thoroughly wet animal	Use 1 qt. 5.7% EC in 25 gals. of water. Repeat application 14 days.	
(Permethrin II, Insectrin X) 10% EC	5	Dip or spray thoroughly	Mix 1 qt 10% EC in 100 gals. of water. Spray or dip entire animal. Reapply sprays to walls and floors after 14 days.		

Swine (continued)

Pests	Material and Formulation	Minimum Days from Last Application to Slaughter	Amount per Animal or Area if Appropriate	Remarks	
	(Atroban, Expar) 11% EC	5	Thoroughly wet animal	Use 1 pt. 11% EC in 25 gals. of water. Repeat application in 14 days. Do not treat more often than once every 14 days.	
	(GardStar) 40% EC	5	Depends on size of animal	Mix 4 fl. oz. 40% EC to 25 gals. of water. Thoroughly wet or dip animals including ears. Spray pen floors, sides and bedding. Repeat after 14 days.	
				Pour-on	
	amitraz (Point-Guard) 2%	7	2.5 to 5 ml per ear; 5 to 60 ml midline of back	Ready to use. Exact dosage depends on animal weight. Review label chart for appropriate application rate and calibrate applicator gun connected to the product container, allowing precise calibrated dosage.	
				Dip	
	amitraz (Taktic) 12.5% EC	3	Immerse entire animal	Mix 1 can (760 ml) 12.5% EC in 50 gals. of water. Baby pigs of any age can be dipped or sprayed. Both animals and premises should be treated at the same time and 7 to 10 days later after the initial treatment. Apply mixture within 6 hours after mixing.	
	lindane (Restricted Use) 12.4% EC 20% EC	60	Immerse entire animal	Mix 3 pts. 12.4% EC or 2 pts. 20% EC in 100 gals. of water. Do not treat animals under 3 months of age or sows within 2 weeks of farrowing or for at least 3 weeks thereafter. Repeat dips every 2 to 3 weeks if needed.	
			Injection		
ivermectin (Ivomec) 0.27%	18	1 ml per 20 lbs. body weight	Ready to use. For grower and feeder pigs. Inject subcutaneously and use aseptic procedures. Follow label directions. Consult label for treatment schedule.		
(Ivomec) 1%	18	1 ml per 75 lbs. body weight	Ready to use. Inject subcutaneously and use aseptic procedures. Follow label directions. Consult label for treatment schedule.		
			Feed Additive		
(Ivomec Premix)	5	100 mcg/kg body weight. Add to starter, grower and finisher feeds at 300 g per ton to supply 1.8 g ivermectin per ton (2ppm) of feed.	For growing pigs up to 220 lbs. body weight. Feed the recommended dose level daily for 7 days. For the treatment and control of gastrointestinal roundworms, kidney worms, lungworms, lice and mange mites in growing pigs. Ivomec Injection for Swine (1% ivermectin) is the recommended formulation for adult swine.		

Note: Many of the pesticides recommended for mite control can also be used for lice. (Follow label directions and safety precautions.)

Mange Maintenance Program

1. Spray sows and gilts in their stalls before transfer to farrowing pens.
2. Spray or dip sows and young pigs one day before weaning or before moving to fattening houses.
3. Spray sows in their farrowing pens before transfer back to the sow stalls.
4. Isolate and spray any new or additional animals with two treatments 7 to 10 days apart before mixing with other animals.
5. Spray boars every 2 or 3 months.
6. Treat the premises.

[Back](#) | [Forward](#) | [Table of Contents](#)